



HSS340 Prep

Proudly designed in the UK, Precision's Space Saver Prep Counter is perfect for smaller operations or where space is at a premium. This compact all stainless steel prep counter offers high performance cold prep and storage solutions in even the smallest of kitchens.

An insulated hinged lid is supplied as standard to reduce energy consumption and maintain safe food temperatures for longer periods.

### Key Features:

Stainless Steel Interior & Exterior

Front Breathing & Venting 32°C Ambient Rated Refrigeration System

Pan Well Holds 6 x GN1/3 - 150mm Deep pans

Insulated Lid

R134A Refrigerant

Zero ODP Injected Polyurethane Insulation - 60mm

+1 / 4°C Refrigerator Temperature Range

Electronic Controller With Easy Read LCD Screen

Hot Gas Defrost

Door / Drawer Locks Fitted As Standard

Rifle Bore Coated Evaporators

Integrated Flush Door Handle

Stainless Steel Perforated Shelves - Anti Tilt Slides

Hi / Lo Audio Visual Temperature Alarms

Condensing Unit Safety System To Protect Compressor From Blocked Condensers

Self Closing Doors

Adjustable Levelling Feet

Waste Heat Recovery Condensate Vaporiser System



### Options:

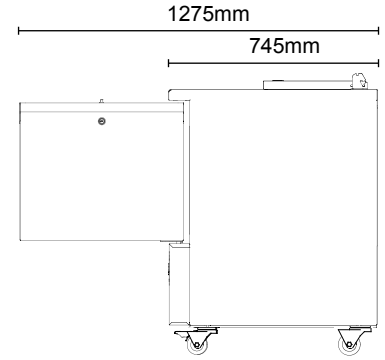
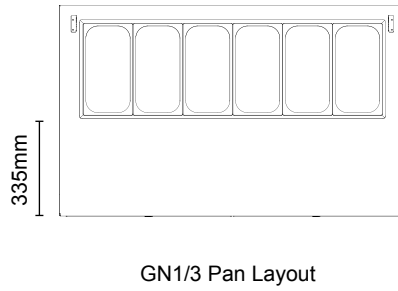
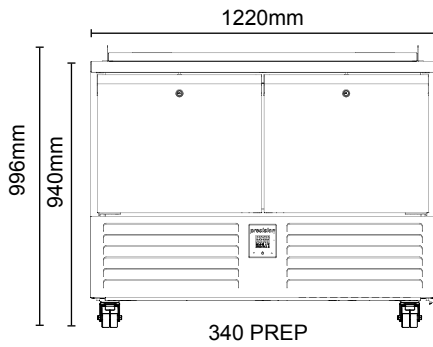
Bank of 2 Drawers (100/150mm Depth)

Stainless Steel Back

Extra Std Stainless Steel Perforated Shelves / Slides

GN 1/3 Pan Set

Precision Connect



Model	HSS340 PREP
Type	Refrigerator
Material	ST/ST Int/Ext
Shelf Size	510 x 482
Number of GN1/3 Pans Accepted (150mm Deep)	6
Number of Shelves	4
Max Number of Shelves (100mm Spacing)	8
Temperature Range	+1 / 4°C
Exterior WxDxH (mm)	1220x745x996
Weight (KG)	100
Refrigerant	R134a
Refrigeration Watts (+45°C Condensing)	373
Evaporating Temp	-10°C
Heat Rejection Watts*	610
Power	220 / 50 / 1
Running Amps	1.7
Total Electrical Load - kW	0.37

\* Heat Rejection is taken at the listed evaporating and condensing condition. Watts is calculated by taking the total power of the cabinet.

We are constantly innovating and improving our products. Please always check our website for the most up-to-date version of this spec sheet